

B_h

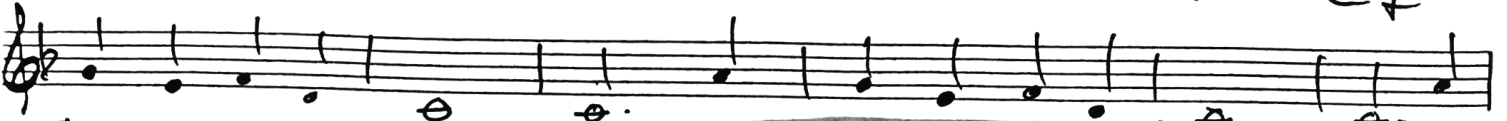
Es ist ein Rosenprunzen (2)

David Beecroft - Fehrbellinerstr. 51 - 10119 Berlin, Germany
Tel: (49) (030) 216 98 06

B G phryg R3 R6
Ab Δ 7 F5 G-7 C7

Gtruss R3 R6
Ab Δ 7 +5

G-7 C7



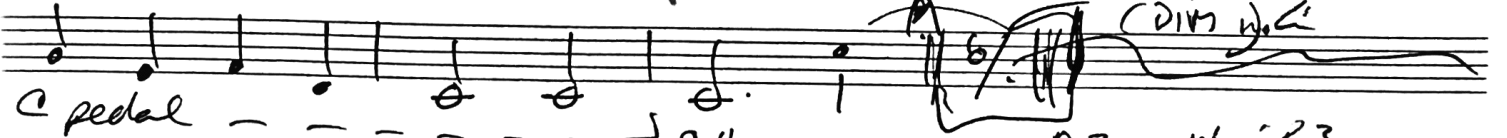
C pedal...

Ab Δ 7 +5

G-7 C7

(C# Δ 7 +5 Solos 2 bars)

E# Δ C# Locrian R2 R7



C pedal

Lyd. C#

G D-⁹

Eb

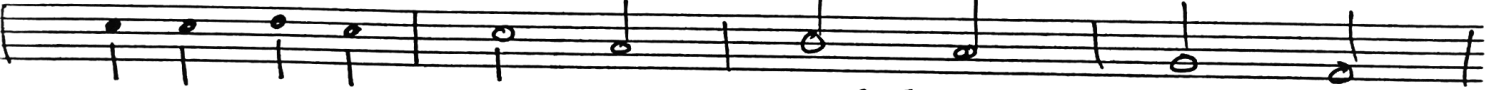
F Ion.

Dor G-

A phryg R3

Bb A phryg R3

B0 A eol R3



C M(x)

C# +5 / C

✓ R3 R7
E aol (R3)

phryg R3 R6 (x)



D-8
al Solos

am D Beecroft

Solos A1 A2

